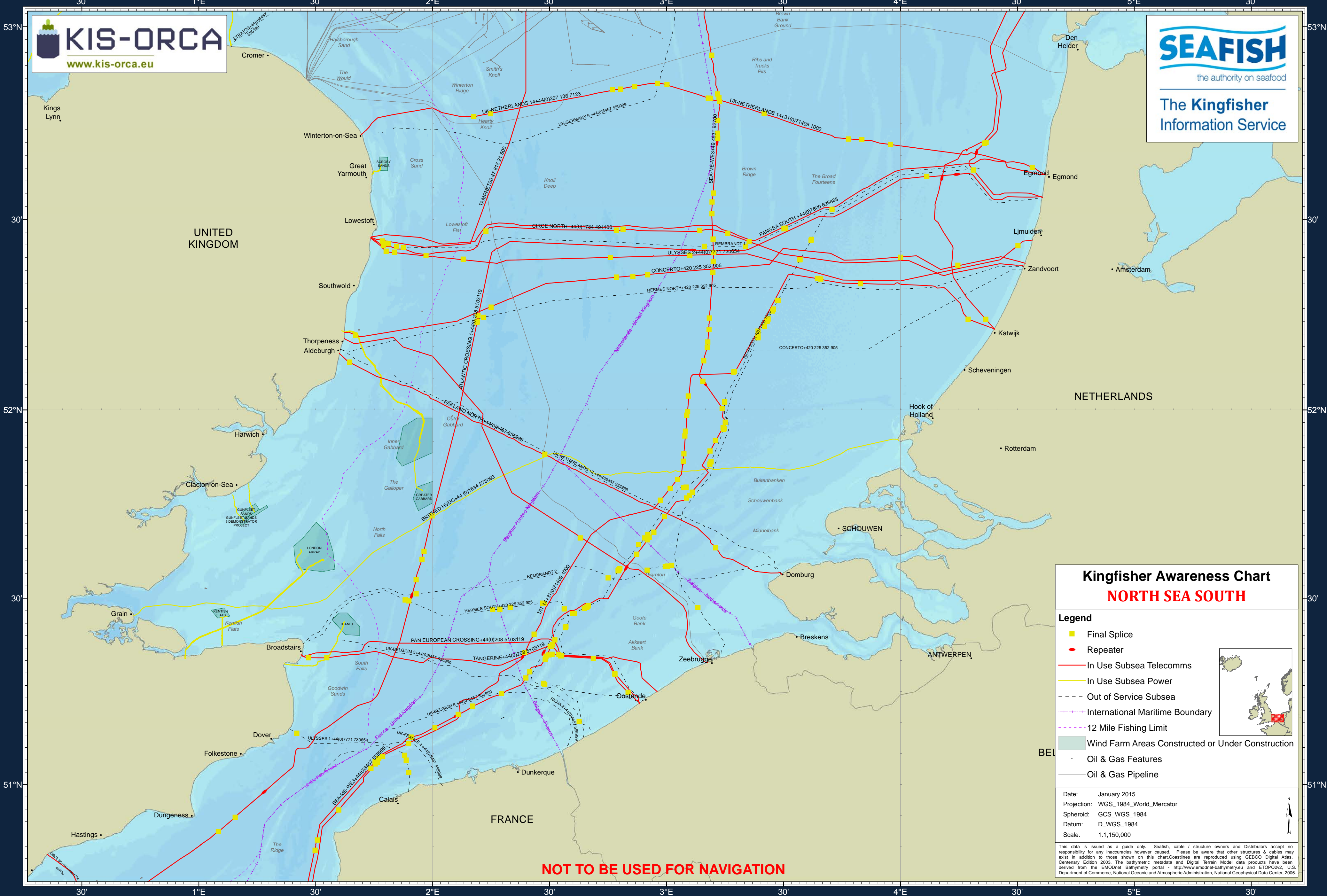


NORTH SEA SOUTH

Kingfisher Awareness Chart



Kingfisher Awareness Chart NORTH SEA SOUTH

Legend

- Final Splice
- Repeater
- In Use Subsea Telecomms
- In Use Subsea Power
- Out of Service Subsea
- International Maritime Boundary
- 12 Mile Fishing Limit
- Wind Farm Areas Constructed or Under Construction
- Oil & Gas Features
- Oil & Gas Pipeline

Date: January 2015
Projection: WGS_1984_World_Mercator
Spheroid: GCS_WGS_1984
Datum: D_WGS_1984
Scale: 1:1,150,000

This data is issued as a guide only. Seafish, cable / structure owners and Distributors accept no responsibility for any inaccuracies however caused. Please be aware that other structures & cables may exist in addition to those shown on this chart. Coastlines are reproduced using GEBCO Digital Atlas, Centenary Edition 2003. The bathymetric metadata and Digital Terrain Model data products have been derived from the EMODnet Bathymetry portal - <http://www.emodnet-bathymetry.eu> and ETOPO2v2, U.S. Department of Commerce, National Oceanic and Atmospheric Administration, National Geophysical Data Center, 2006.

NOT TO BE USED FOR NAVIGATION

PLEASE KEEP CLEAR OF AND DO NOT DAMAGE SUBSEA CABLES THESE CABLES CARRY HIGH VOLTAGES AND CAN BE DANGEROUS TO LIFE IT IS AN OFFENCE TO WILFULLY DAMAGE SUBSEA CABLES